

FOR IMMEDIATE RELEASE

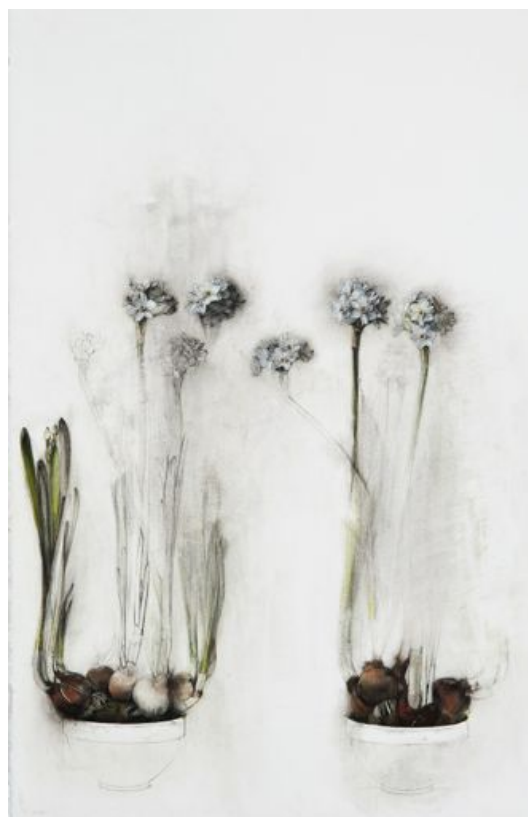
April 2014

## LINDA ETCOFF

new drawings



*Red Amaryllis*, 2014, pastel, charcoal and crayon on paper,  
49 1/2 x 26 in



*Paperwhites*, 2013, pastel, charcoal and crayon on paper, 40 x 26 in

The Drawing Room is pleased to present two exhibitions on view April 11 through May 18, **LINDA ETCOFF *new drawings*** and **LAURIE LAMBRECHT *photographs & knitted sketches***.

Linda Etcoff explores the passage of time in her close observation of the short, perfect life of flowers she has tended and observed for years: Echinacea and sunflowers in the fall, amaryllis, hyacinth and narcissus bulbs in the winter, and long stem French tulips in the spring. Recalling the vibrant tradition of presenting multiple views of the same botanical specimen on one sheet, Etcoff juxtaposes the postures of her subjects with a masterful drawing process. Composing all-over visual fields on each page, she often adds another sheet of paper as the compositions grow like a garden across land. Her drawing technique mirrors the transformation of the natural form itself as it comes to life in explosive powdered pigment or is erased, left to the imagination to complete.

(over)

For two decades, Etcoff's keen eye and deft hand with pastel and charcoal have followed cut fresh flowers in glass vases and the habits of winter bulbs as they emerge from the soil in clay pots. Recalling Odilon Redon's use of pastel to animate purple anemones on paper and Ellsworth Kelly's spare graphite contour drawings of leaves, Etcoff favors the velvet magentas and deep yellows of sunflower corollas, the svelte lime green stems of hushed pink hyacinths and the graceful dance of the amaryllis bulb as it responds to the north light of her studio.

Etcoff's drawings follow the momentous events in the life cycle of our most familiar New England cultivars as they open and loom toward us, recede, or turn into the shade. Without the horizon in mind, each page is an abstraction of exquisite articulations – the choreography of color and line in white space. The narcissus bulbs are fully rendered in their shiny, crisp skins while the stems rise as faint graphite contours to hold a burst of white petals that float in the air. Etcoff is a consummate draftsman who has made her subjects her own.

Linda Etcoff's work is represented in public and private collections throughout the country including the Boston Museum of Fine Arts, The DeCordova and Dana Museum, the Herbert Plimpton Foundation, Rose Art Museum at Brandeis University, The Gund Collection in Cambridge, MA, Philip Morris Companies, Kidder Peabody Investment Brokerage Company in New York and Chase Manhattan Bank in Boston and New York.

[www.drawingroom-gallery.com](http://www.drawingroom-gallery.com)

**Gallery hours: Monday, Thursday, Friday and Saturday 10-5; Sunday 11-5**

For further information and reproduction quality images, please contact Janet Goleas at 631.324.5016