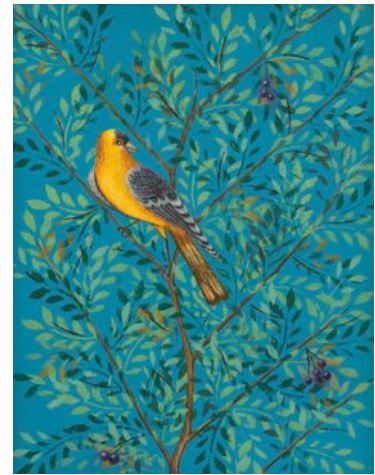


FOR IMMEDIATE RELEASE

December 12, 2015 – January 31, 2016

WINTER SALON

The Drawing Room is pleased to present its second annual Winter Salon, an eclectic installation of contemporary works by many gallery artists juxtaposed with 18th and 19th century natural history drawings, European plein air studies, decorative arts designs, herbaria and Beaux Arts watercolors. The curatorial perspective of pairing traditional art forms on paper with contemporary artistic practice is one that has been central to the gallery's program since its inception in 2004.

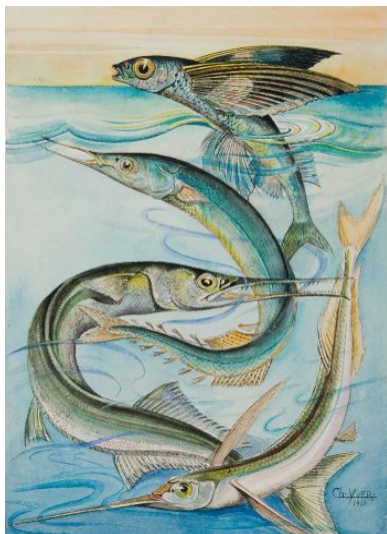


Antonia Munroe, *The American Goldfinch and Acacia with Black Berries*, 2015, pigment dispersion on panel



Antonio Asis, *Cercles concentriques (2205)*, 2011 gouache on paperboard

Works by **John Alexander, Stephen Antonakos, Antonio Asis, Alice Aycock, Jennifer Bartlett, Mary Ellen Bartley, Adam Bartos, Jane Freilicher, Sue Heatley, Sharon Horvath, Bryan Hunt, Robert Jakob, Laurie Lambrecht, Vincent Longo, Antonia Munroe, Adrian Nivola, Costantino Nivola, Jean Pagliuso, Fairfield Porter, Dan Rizzie, Alexis Rockman, Raja Ram Sharma, Alan Shields, Donald Sultan, Jane Wilson and Jack Youngerman** will be installed with historical drawings that served a practical function in design, architecture and natural history in earlier eras.



Charles Yver, *Petit Atlas des Poissons, Vol I, Plate IX: PERCESOCES*, c. 1941, watercolor on paper

In this salon hanging that assembles many works on each wall the enduring inspiration of the 19th century drawing room comes alive. The gallery invites viewers to look beyond conventional divisions in mediums and genres to consider the pleasures and questions raised by linking a breadth of objects through aesthetic and conceptual connections.

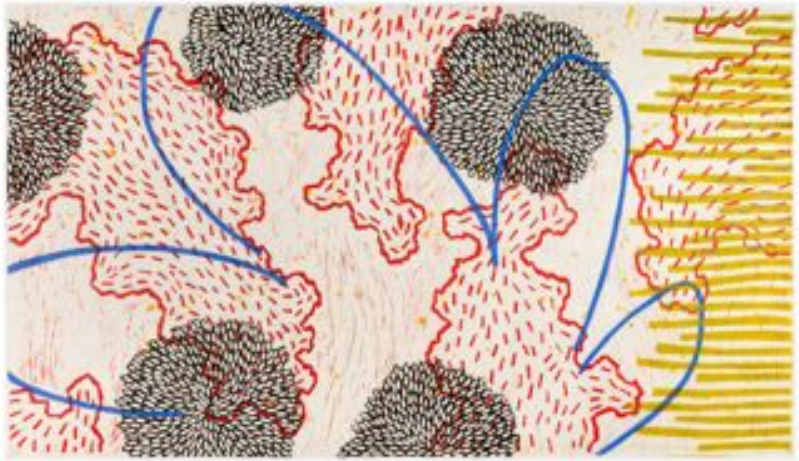


Jules-Germain Olivier, *Study of a Corinthian Capital* 1890-1900, pencil and watercolor on paper

Organized within loose thematic groupings, each wall offers a fresh context for experiencing contemporary art and material culture from distant periods.



Ecole Lyonnaise, *Wallpaper design with Flowers and Purple Strips*
c. 1900, gouache on paper



Sue Heatley, *Dark Dahlia Navigation*, 2015, monotype, linocut, gouache on Sekishu paper



Alexis Rockman, *Weakfish (Lynoscion regalis) Northwest Harbor*, 11/13/10, sand and acrylic polymer on paper

www.drawingroom-gallery.com

Gallery Hours: Monday, Friday and Saturday 10-5; Sunday 11-5

For further information and reproduction quality images, please contact Janet Goleas at 631 324.5016