

THE DRAWING ROOM 55 Main Street East Hampton New York 11937 T 631 324 5016

PRESS RELEASE

KATHRYN LYNCH
Elsewhere
May 26 – July 3, 2023



F Train Over Gowanus Canal, 2021, oil on canvas
60 x 48 inches



Winter Light, Delhi, 2023, oil on linen, 63 x 60 inches

Up Close and Far

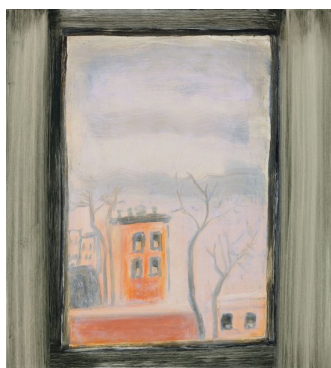
On view May 26 through July 3, 2023, The Drawing Room is pleased to present **KATHRYN LYNCH | Elsewhere**, recent oil paintings of the dramatic landscapes and cityscapes inspired by Lynch's walks along the Brooklyn promenade, the dunes in Sagaponack, and the trails in her new environs in the Hudson River Valley. Always on the move to capture new sensations of place, Lynch explores her terrain with sketchpad in hand to note the precise composition and quality of light of a single moment in a specific location. From sketch to lush, fully realized painting, in both small and large scale, Lynch recreates vivid impressions of place and time.

The earlier works on view capture the lively drama of the city's edges: waterways under bridges, often lit by a virtual starry sky of lights from skyscraper windows. In the compressed composition of the *F Train over Canal*, tracks are interlaced with bridges and trains passing over cars above the tugboats skimming the river. In her painting *BQE in Blue*, Lynch immerses the night skyline in a foggy blur reflected in the river. Tugboats and ferry boats meander through and around the shorefronts of Manhattan. Framing her view of the Gowanus River through the subway car window or looking toward Manhattan through a balcony gate on the Brooklyn waterfront, Lynch captures fleeting impressionist vistas that describe the motion around Manhattan Island.

Recently Lynch has been captivated by the majestic views across the Catskill River from her new studio. Working and walking in the historic Hudson Valley preserved in the paintings by Frederick Church at Olana, Lynch visits the porch of the Thomas Cole house with her sketchpad in hand. Her expansive landscapes such as *Leaving Olana* invite one to walk into the painting through the meadow grasses toward the descending sun on the horizon. This immersive large-scale painting with the sensuous brushwork and silken palette enjoys a purely abstract composition, except for the unmistakable gently setting sun.

Lynch's compositions expand and shrink with ease as her painterly gesture finds the scale for the subject. In her powerful small paintings, which often capture nocturnal views, she hones in on one wave breaking, the orange orb of a Tuscan sunrise, or the last contour of light held on a mountain ridge. Each work preserves an incident of light and atmosphere. The spread of a memorable moonrise spilling across a bay recalls Munch's expressionist compositions. In her 14 x 10" canvases, as well in her 60 x 48" majestic compositions, Lynch defines the intimacy of being in nature, alone.

Kathryn Lynch was born and raised in Philadelphia, PA. After earning her undergraduate degree from William Smith College, Lynch completed her MFA from University of Pennsylvania in 1990 and a residency at the Skowhegan School of Painting & Sculpture in 1991. Her work has been exhibited widely across the United States and she has received numerous grants and awards, including the 2018 NYSCA/NYFA Artist's Fellowship in Painting. Lynch's work can be found in public and corporate collections such as the Fort Wayne Museum of Art, the University of California Berkeley Art Museum, Johnson & Johnson, Pfizer and Microsoft.



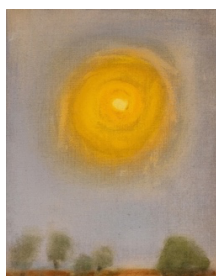
Gowanus out the Window, 2023
oil on aluminum, 20 x 18 inches



Dogs on Gibson Beach, 2023, oil on canvas
48 x 35 inches



Exiting Olana, 2023, oil on canvas
53 x 48 inches



On the Road to Manduria
2022, oil on linen
14 x 11 inches



BQE in Blue, 2021, oil on canvas, 30 x 48 inches

For further information and reproduction quality images
contact Candace Whitman at 631 324.5016 or info@drawingroom-gallery.com
www.drawingroom-gallery.com