



CONVERGENCE

Artists of Long Island's East End

In celebration of the gallery's 20th anniversary

CONVERGENCE

Artists of Long Island's East End

October 5 - December 16, 2024



EMILY GOLDSTEIN & VICTORIA MUNROE

THE DRAWING ROOM

55 Main Street 2nd floor East Hampton New York 11937

Friday, Saturday & Monday 11-5; Sunday 12-4

Arrived in 1940s

COSTANTINO NIVOLA

RUTH NIVOLA

FAIRFIELD PORTER

Arrived in 1950s

JANE FREILICHER

SHERIDAN LORD

BETTY PARSONS

SAUL STEINBERG

JANE WILSON

Arrived in 1960s

ROBERT DASH

DOROTHY RUDDICK

RACELLE STRICK

ALBERT YORK

JACK YOUNGERMAN

Arrived in 1970s

JENNIFER BARTLETT

VINCENT LONGO

ALAN SHIELDS

In celebration of the gallery's 20th anniversary, Emily Goldstein & Victoria Munroe are pleased to present this exhibition spotlighting sixteen artists who have been central to The Drawing Room's program since the gallery's inception in 2004. Each forged formative relationships and enduring bodies of work within the historic post-war community that emerged on Eastern Long Island. From Costantino Nivola and Ruth Nivola's arrival in the East Hampton hamlet of The Springs in 1948 and Fairfield Porter's move to Southampton in 1949, through the ensuing decades when their contemporaries and younger artists established homes and studios nearby, the region provided a place for shared experiences and inspiration across generations.



FAIRFIELD PORTER

Daffodils and Pear Tree, 1973, oil on Masonite, 22 1/2 x 18 1/2 inches



JANE FREILICHER
Untitled (Still Life), 1953, pastel on paper, 25 1/2 x 39 inches



JANE FREILICHER

Untitled (Still Life), c. 1954, pastel on paper, 17 x 14 inches



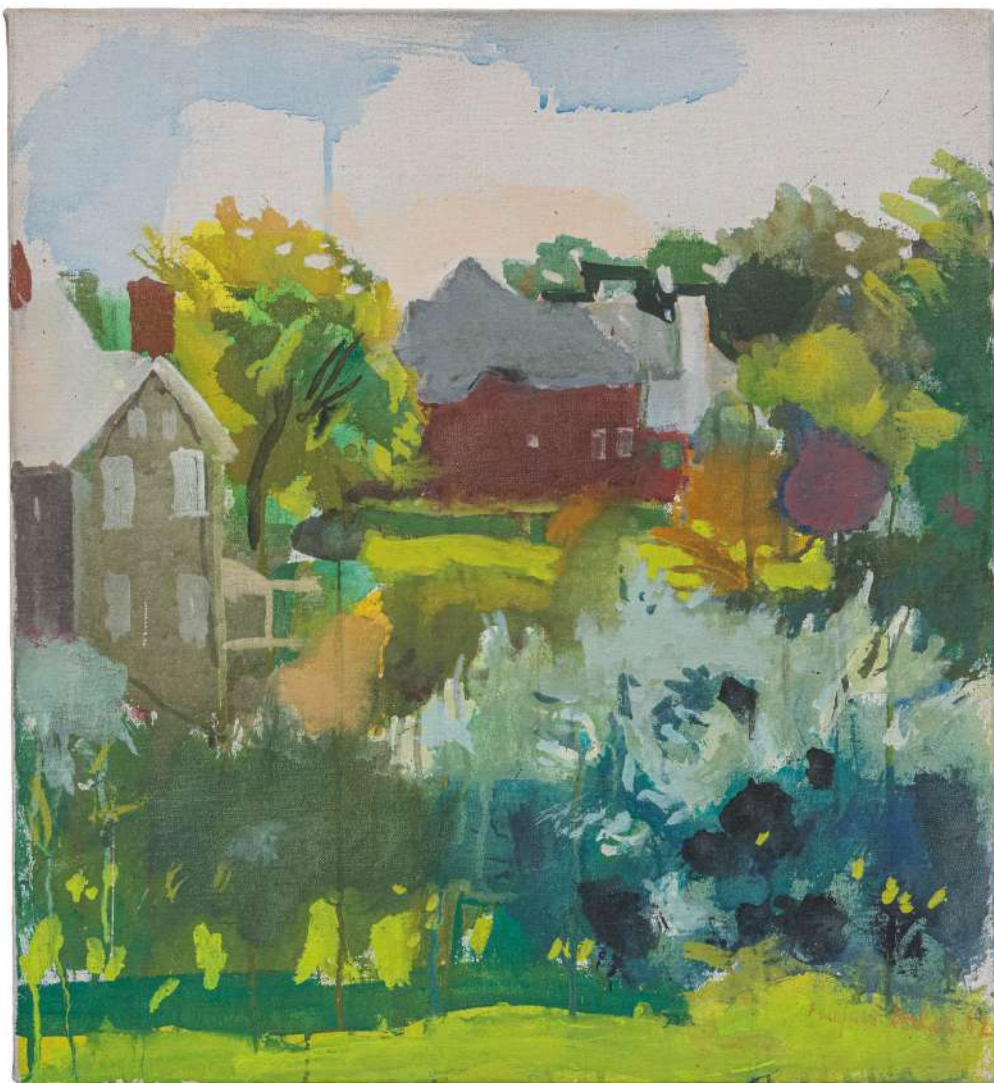
JANE FREILICHER

Untitled, 1967, watercolor and crayon, 24 1/2 x 19 1/2 inches



JANE FREILICHER

Untitled, c. 1980s, colored pencil on paper, 3 1/2 x 4 3/8 inches



FAIRFIELD PORTER

Bushes, 1962, casein on canvas, 24 x 22 1/8 inches



COSTANTINO NIVOLA

M35, 1960-63, concrete, 8 1/2 x 11 3/4 x 6 inches



COSTANTINO NIVOLA

M.06, 1968, concrete, paint, 11 1/4 x 6 1/4 x 5 1/2 inches



COSTANTINO NIVOLA

Q27, c. 1984-1986, tin with paint, 5 x 6 x 3/4 inches



JANE WILSON

Wonderful O, c. 1960s, oil on canvas, 11 x 12 inches



JANE WILSON

Peonies: After Manet, c. 1980, watercolor on paper, 4 x 5 3/4 inches



JANE WILSON

Miracle Creek, 1961, oil on canvas, 20 x 16 inches



SHERIDAN LORD

Landscape, July-August 1979, oil on linen, 30 x 24 inches



ALBERT YORK

Boats on River, late 1950s - early 1960s, oil on panel, 9 x 11 7/8 inches



BETTY PARSONS

Palace/Greece, 1953, gouache on paper, 22 1/2 x 28 1/2 inches



BETTY PARSONS

Untitled (Clock), c. 1970s, painted wood, clock parts, 15 x 10 5/8 x 2 1/2 inches



JACK YOUNGERMAN

White Blue, 1962, oil on canvas, 20 x 22 1/4 inches



JACK YOUNGERMAN

Ink #40, 1968, india ink on paper, 23 x 29 inches



SAUL STEINBERG

Untitled, 1970-90, crayon, black pencil on wood, 11 1/4 x 4 1/2 x 1 inches



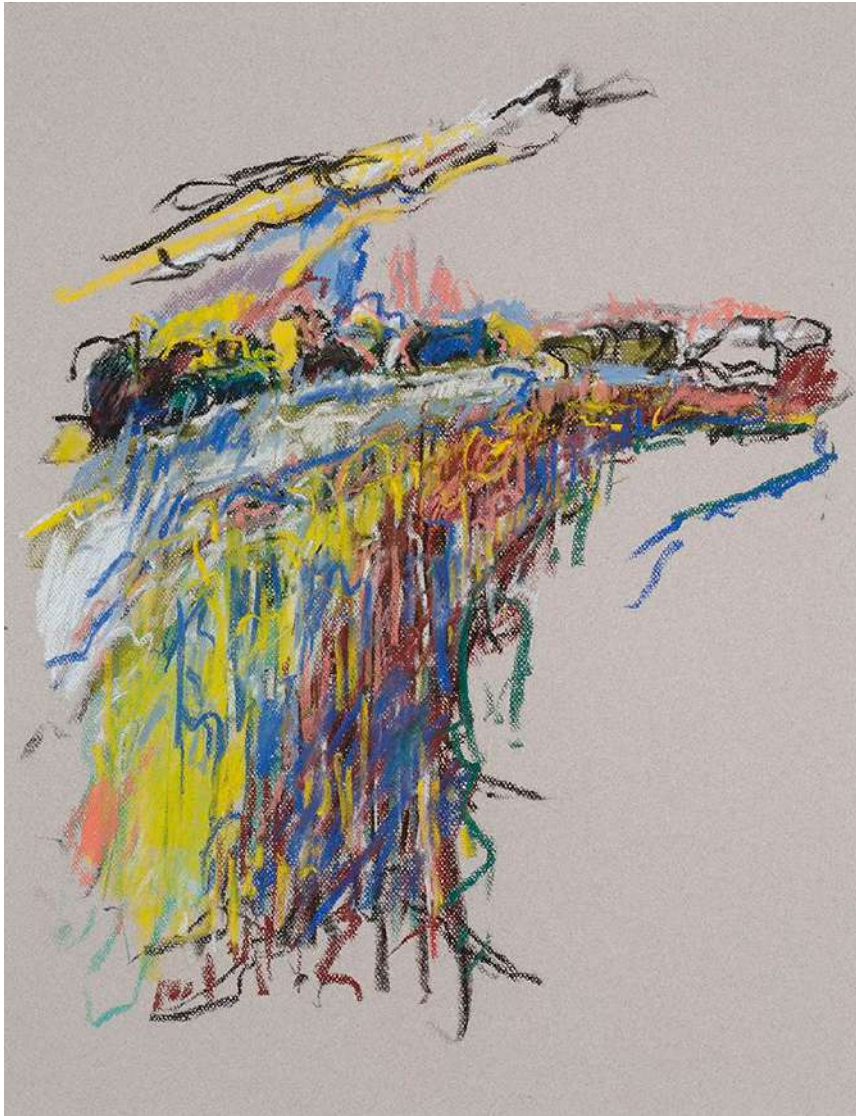
SAUL STEINBERG

Untitled, c. 1978-80, colored pencil, crayon and pencil on paper, 14 1/2 x 23 inches



ROBERT DASH

The Middle of October, acrylic on linen, 40 x 30 inches



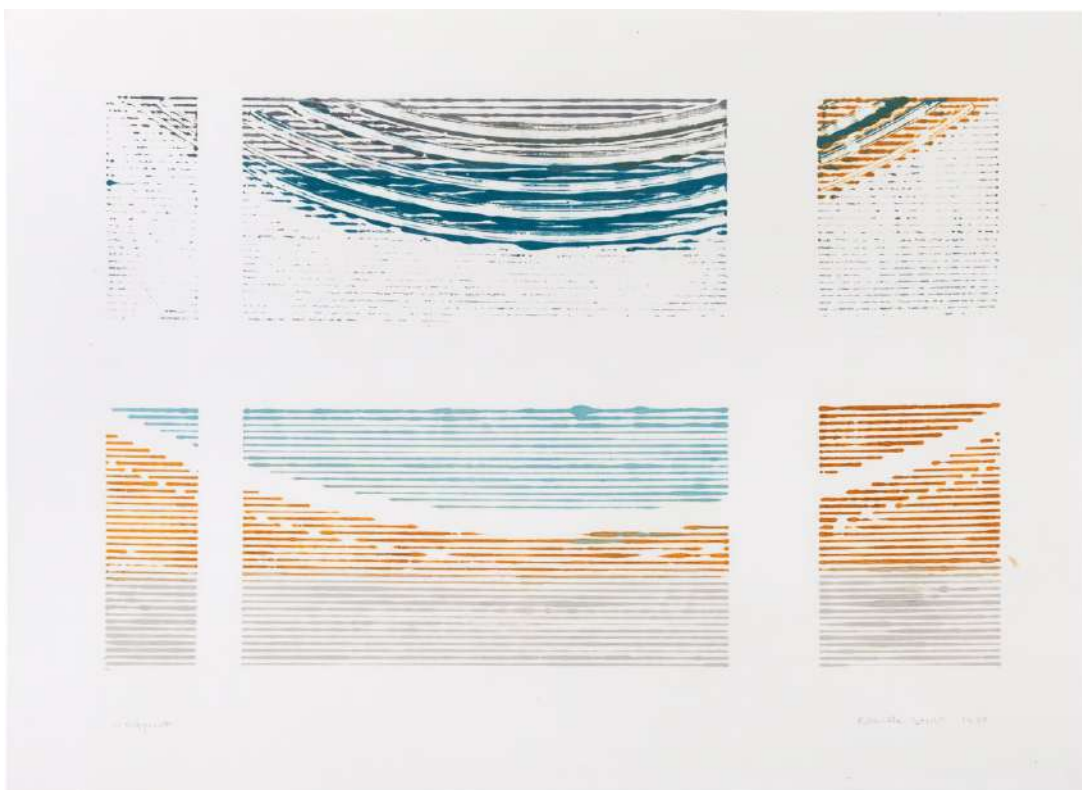
ROBERT DASH

From Blue Hill I, 2013, pastel on antique rag paper, 25 1/2 x 19 3/4 inches



RACELLE STRICK

Monotype 1003, c. 1982, acrylic on paper, 17 7/8 x 24 inches



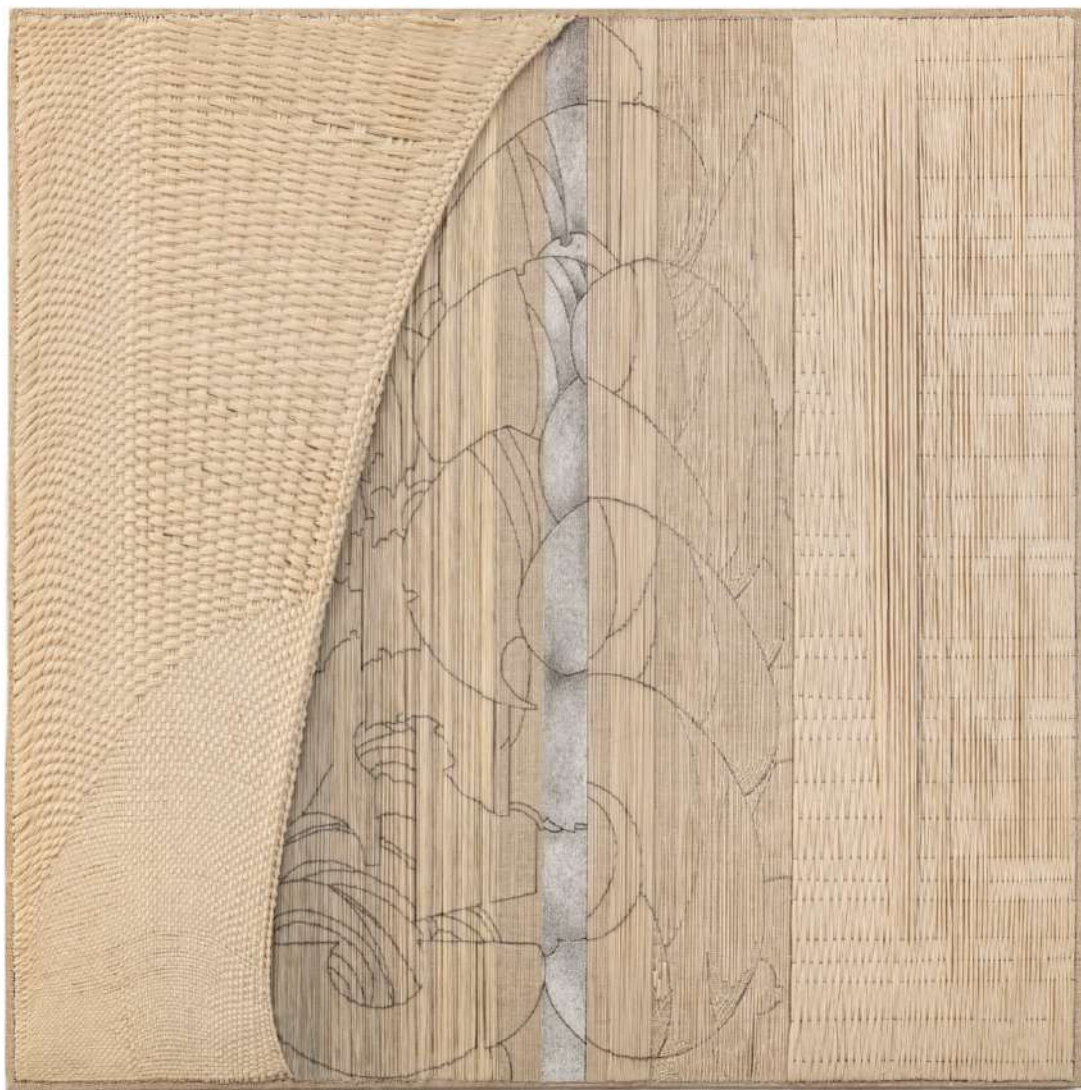
RACELLE STRICK

Monotype 1007, 1980, acrylic on paper, 17 1/2 x 24 3/16 inches



DOROTHY RUDDICK

Buttonhole, c. 1975-76, wool and cotton thread on linen, 21 x 22 inches



DOROTHY RUDDICK

Untitled (T.014), 1981, cotton thread, ink and gesso on linen, 27 x 27 inches



DOROTHY RUDDICK

Untitled (T.040), c. 1977, wool, cotton & silk thread on linen, 8 1/2 x 9 x 2 inches



DOROTHY RUDDICK

Untitled (T.010), 1981, cotton thread, ink, watercolor and gesso on linen, 27 x 27 inches



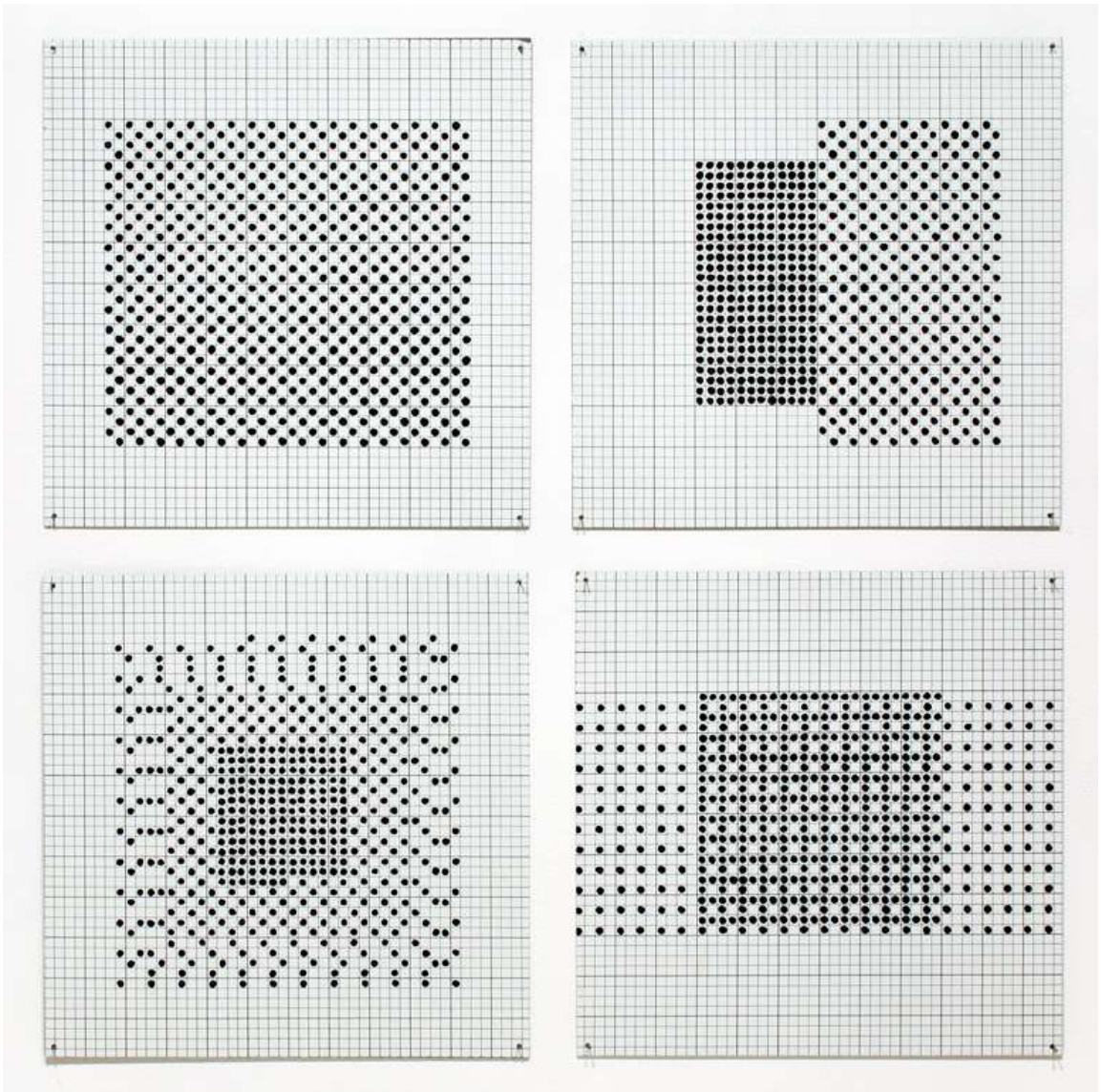
RUTH NIVOLA

Untitled, gold thread and fabric, c.1970s, 19 1/2 x 11 1/4 inches



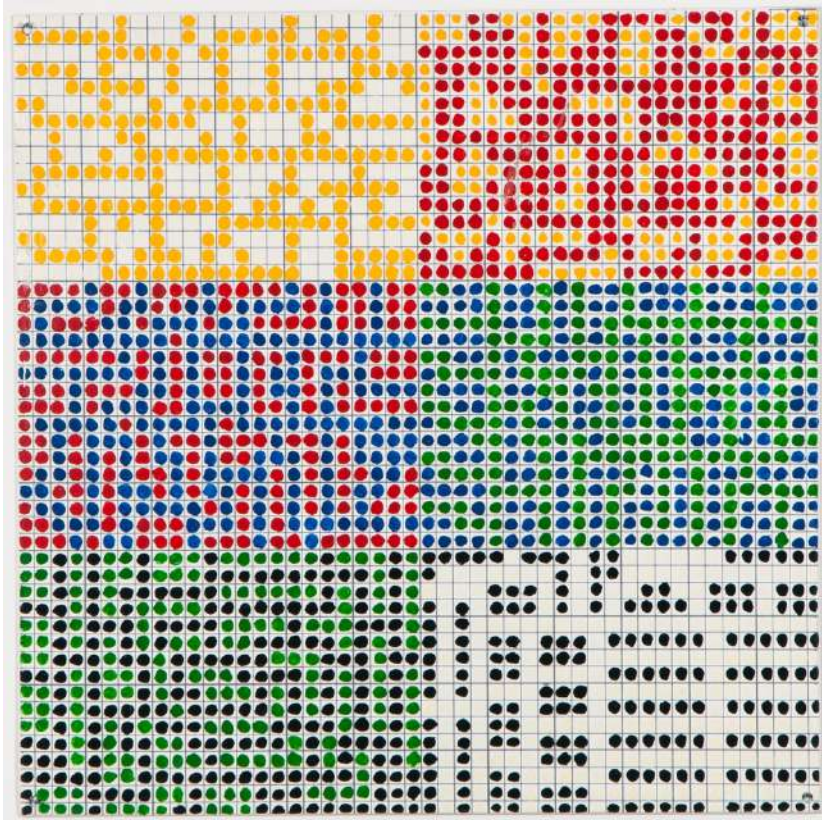
RUTH NIVOLA

Untitled, gold thread and fabric, c. 1970s, 15 x 15 inches



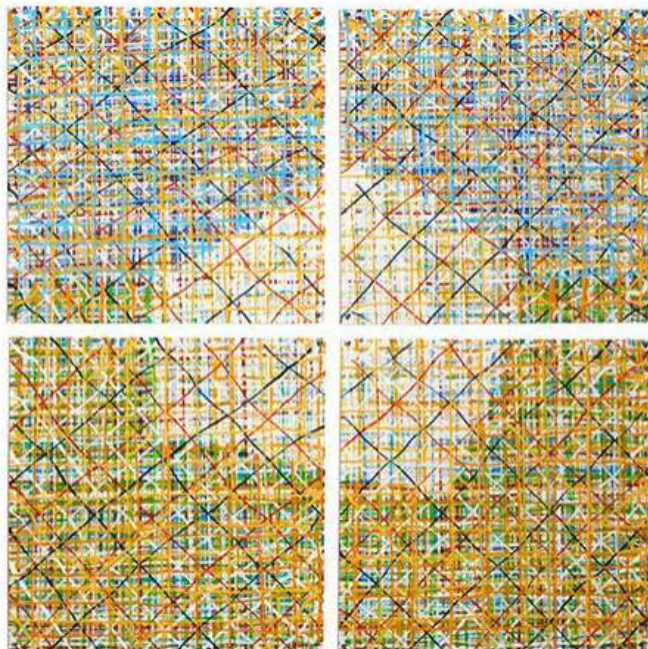
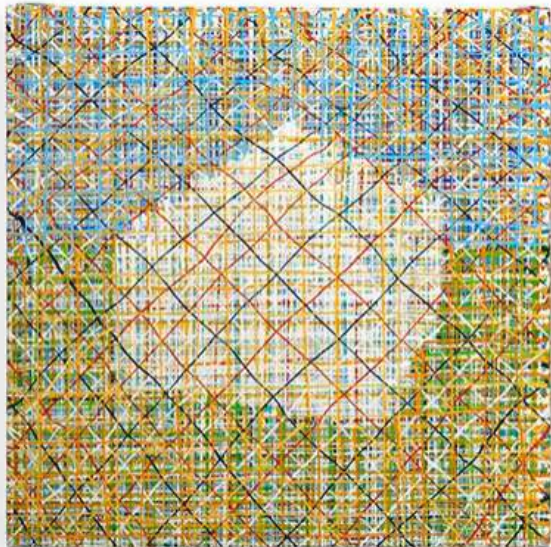
JENNIFER BARTLETT

Black 6" Squares Series #7, 1972, enamel over silkscreen grid on baked enamel steel plates
25 x 25 inches (four units)



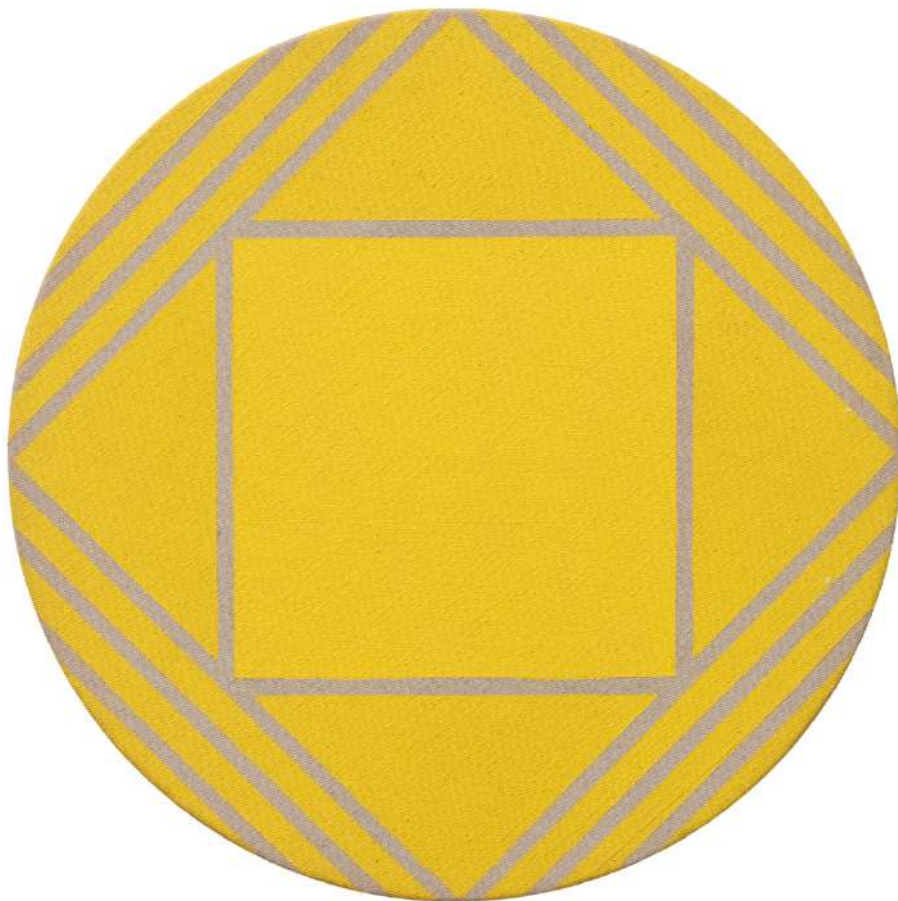
JENNIFER BARTLETT

Sixes, 1970 – 1971, enamel over silkscreen grid on baked enamel steel plate, 12 x 12 inches



JENNIFER BARTLETT

House: Small Pastel Plaid, 1998, oil on canvas and oil over silkscreen grid on baked enamel
steel plates, 20 x 20 (canvas), 25 x 25 inches (four units)



VINCENT LONGO

Untitled, c. 1966, acrylic on canvas mounted to panel, 13 3/4 inches (diameter)



ALAN SHIELDS

Marcus (from Dragonfly Chip Series), 1989, relief, stitching on handmade paper
24 1/4 x 24 1/4 inches, Ed. 18/24