

*Compositions*

MEL KENDRICK

sculpture

LAURIE LAMBRECHT

tapestries

ALISON ROSSITER

photographs

January 14 - March 12, 2023

THE DRAWING ROOM 55 Main Street East Hampton New York  
Fri & Sat 11 - 5, Sunday 12 - 4 [info@drawingroom-gallery.com](mailto:info@drawingroom-gallery.com) Telephone 631 324 5016









**MEL KENDRICK**

*Untitled, 2002*

gesso and pencil on wood 21 5/8 x 9 1/2 x 5 inches





**MEL KENDRICK**

*Red Tower, 2016*

mahogany and Japan color 13 <sup>3</sup>/<sub>4</sub> x 4 <sup>1</sup>/<sub>4</sub> x 4 <sup>1</sup>/<sub>4</sub> inches



**MEL KENDRICK**

*Blue Barrel, 2016*

walnut and Japan color 14 1/2 x 8 x 8 inches





**MEL KENDRICK**

*Untitled, 2019*

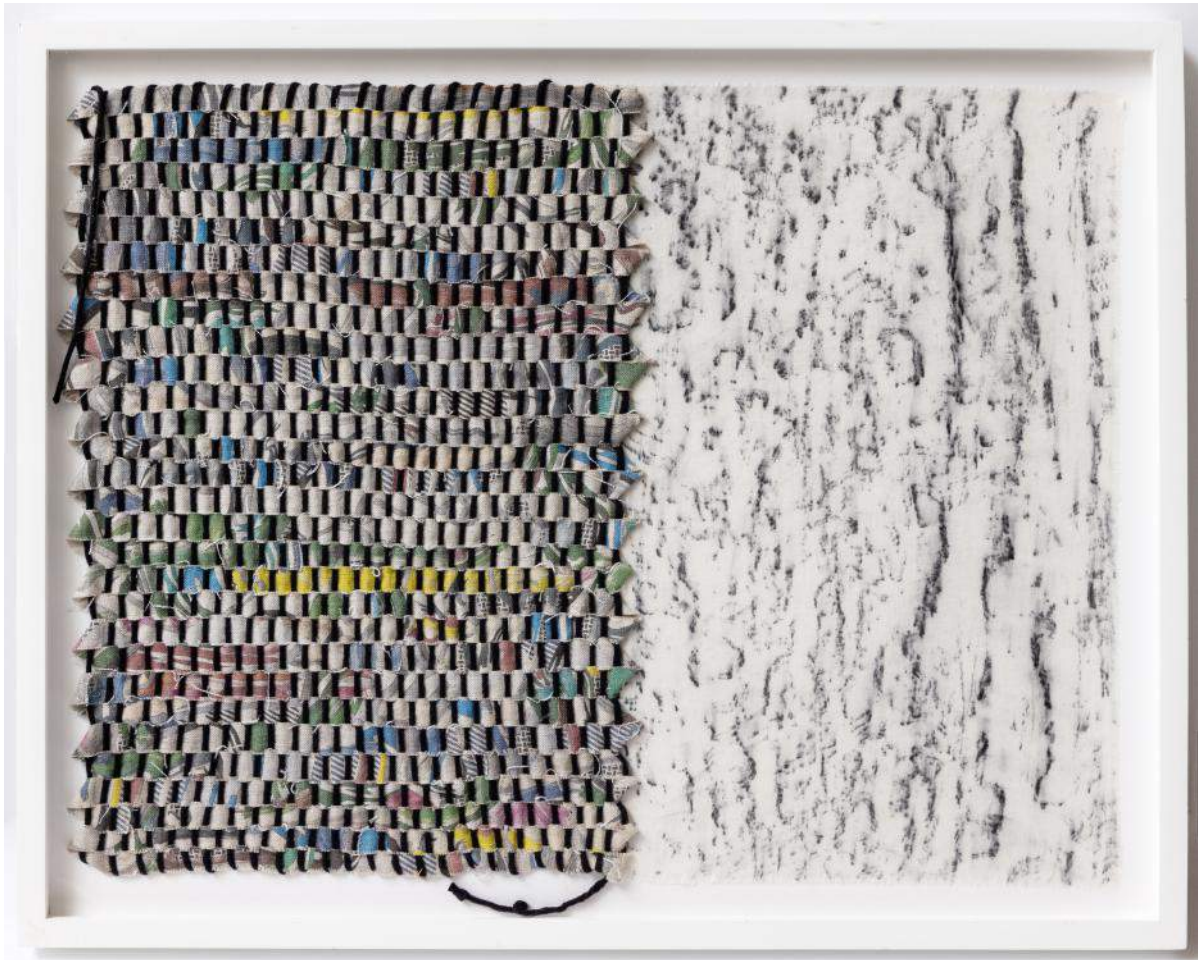
mahogany and Japan color 13 1/4 x 4 1/2 x 4 inches



**MEL KENDRICK**

*The Space Between*, 2018

mahogany and Japan color 9 3/4 x 4 3/4 x 3 inches



**LAURIE LAMBRECHT**

*Bark Cloth/R.L.*, 2018

mixed media, hand woven linen (left), charcoal on linen (right) 19 5/8 x 24 3/4 inches framed



**LAURIE LAMBRECHT**

*Landscape/Painting (Wyoming-Joan Mitchell), 2022*  
tapestry (archival pigment print, sisal, and linen) 32 1/2 x 22 1/4 inches framed



**LAURIE LAMBRECHT**

*Untitled C.R./Painting, 2022*

embroidered tapestry (pigment print, sisal, and linen) 20 1/2 x 19 3/8 inches framed



**LAURIE LAMBRECHT**

*Tree Bark - 2, 2021*

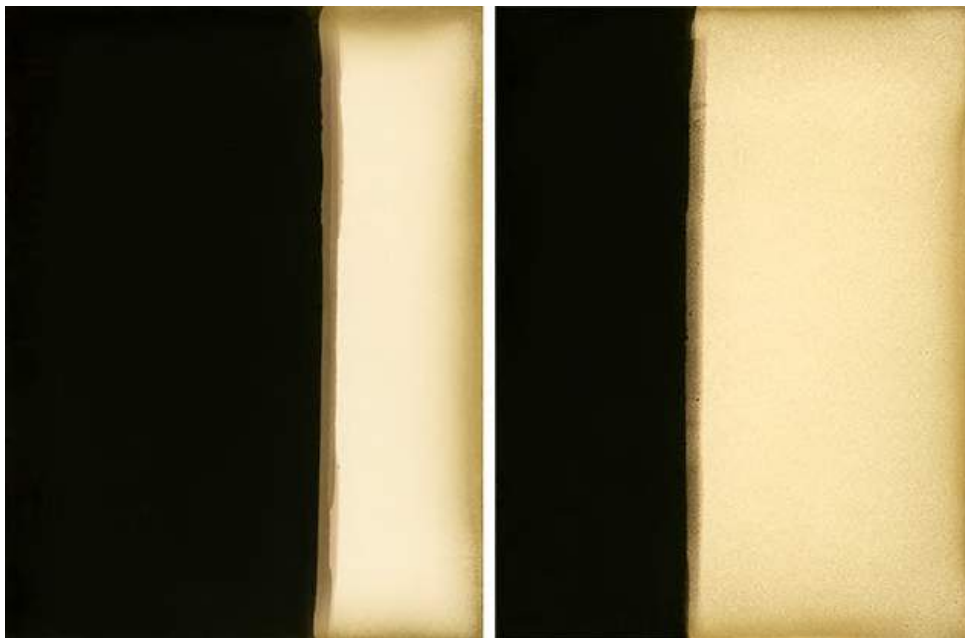
embroidered tapestry (pigment print, wool and, linen) 19 1/4 x 18 1/2 inches framed



**LAURIE LAMBRECHT**

*Bark/Cloth: Sag Harbor (aqua), 2016*

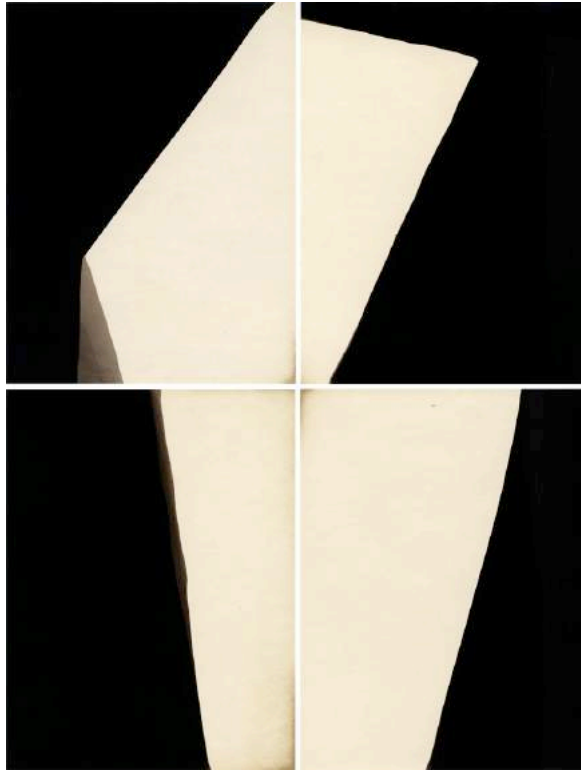
embroidered archival pigment print on linen 17 3/4 X 12 1/2 inches 21 1/8 x 15 1/8 inches framed



**ALISON ROSSITER**

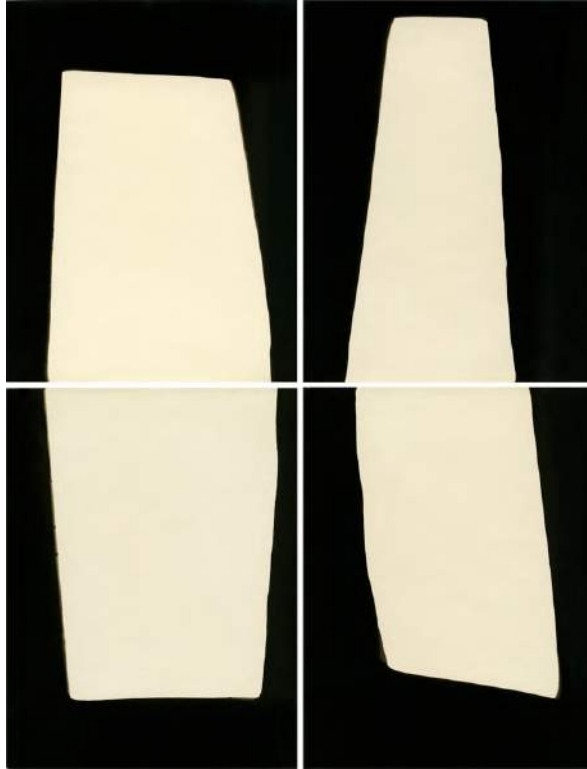
*Grieshaber Frères Dora, exact expiration date unknown, ca. 1900s, processed 2013, 2013*  
two gelatin silver prints 7 7/8 x 10 5/8 inches framed





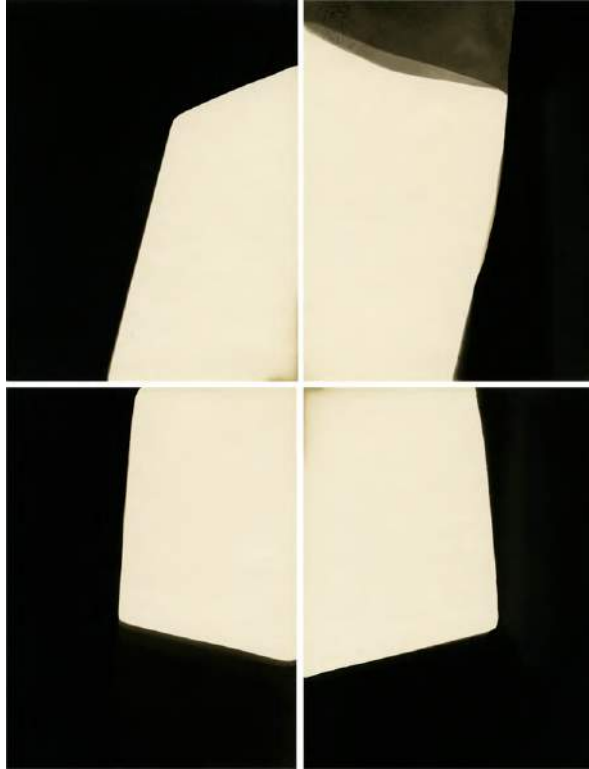
**ALISON ROSSITER**

*Eastman Kodak Azo, exact expiration date unknown, ca. 1940, processed in 2012 (#6), 2012  
four gelatin silver prints 12 x 10 inches framed*



**ALISON ROSSITER**

*Eastman Kodak Azo, exact expiration date unknown, ca. 1940, processed in 2012 (#4), 2012  
four gelatin silver prints 12 x 10 inches framed*



**ALISON ROSSITER**

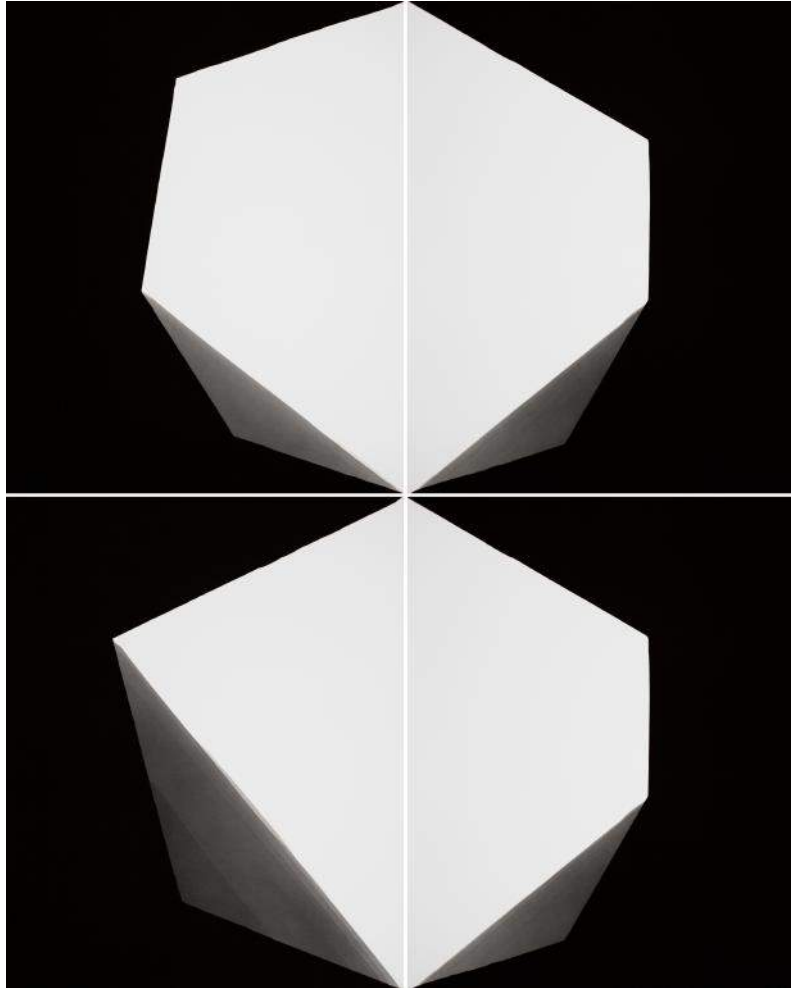
*Eastman Kodak Azo, exact expiration date unknown, ca. 1940, processed in 2012 (#5), 2012  
four gelatin silver prints 12 x 10 inches framed*



**ALISON ROSSITER**

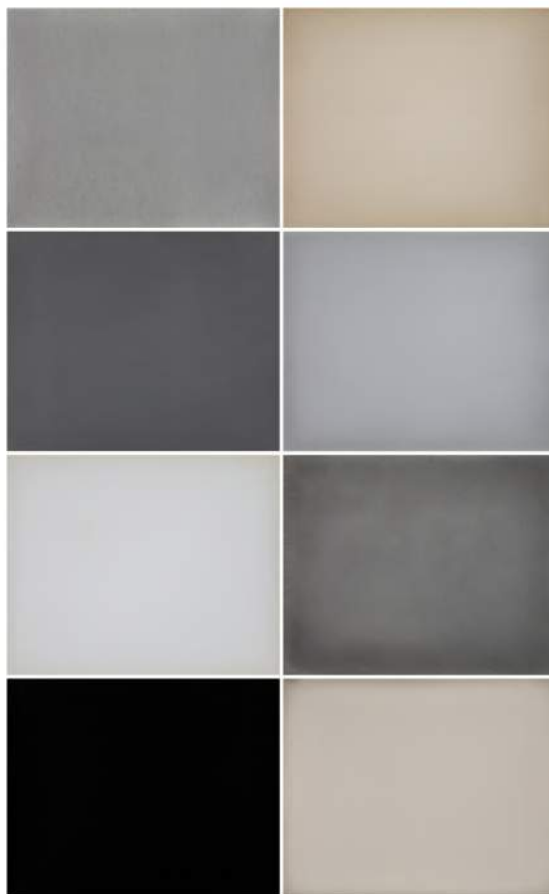
*Density 1922-1923, 2019*

three gelatin silver prints 17 x 15 7/16 inches framed



**ALISON ROSSITER**

*Eastman Kodak Elite, exact expiration date unknown, ca. 1980s, processed 2019 (#6), 2019*  
four gelatin silver prints 23 5/8 x 19 5/8 inches framed



**ALISON ROSSITER**

*Density 1938-1945, 2020*

eight gelatin silver prints 37 1/2 x 25 1/4 inches framed