

FOR IMMEDIATE RELEASE

## AUTUMN SALON

October 7 – November 28, 2016

ANTONIO ASIS | JENNIFER BARTLETT | ADAM BARTOS | CHRISTOPHER FRENCH | SUE HEATLEY | MEL KENDRICK  
VINCENT LONGO | KATHRYN LYNCH | COSTANTINO NIVOLA | RAJA RAM SHARMA | JACK YOUNGERMAN

The Drawing Room is pleased to present **AUTUMN SALON**, featuring selected works by eleven artists whose works range from the precise paintings of Antonio Asis to gestural terracotta reliefs by Costantino Nivola.

In a studio practice spanning over six decades, **Jack Youngerman** has examined structure and fluidity in compositions that move from organic abstraction to complex geometries. Graphic, rigorous and fresh, the distinctive black and white forms that animate his 1960s explorations of positive and negative space harmonize in compositions that are expansive and timeless.



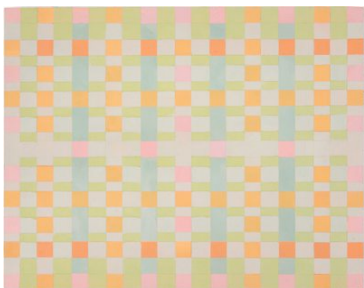
Mel Kendrick



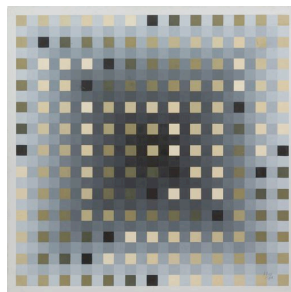
Jack Youngerman

Similarly, **Mel Kendrick** explores volume, density and voids in sculpture ranging in scale from monumental to diminutive. Totemic and abstract, his cast paper and sculptural works evolve through an intuitive process rooted in limitations. Employing an uncompromising sense of cause and effect, both Kendrick and Youngerman have developed rich alphabets of essential forms and structure.

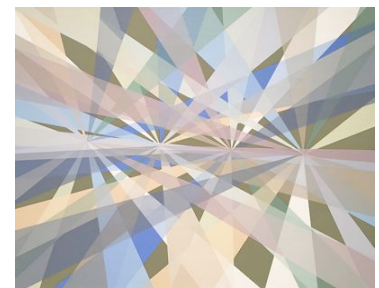
The artists Vincent Longo, Antonio Asis and Christopher French each chart a course of engagement with geometry in their painting practices. Utilizing the grid enables **Vincent Longo** to explore a basic syntax of abstraction through subtle variations in color, tone and form. A master colorist, Longo generates a sense of pictorial evolution in resonant, luminous compositions. **Christopher French** exerts a meticulous system of tonal mapping over radiant beams of color that expand outward from an array of central vortices. Reacting to the light and shadow that surrounds his east end home, French navigates the complex infrastructure of his paintings, merging precision and intuition. Analyzing the color spectrum in a systematic approach to visual perception, **Antonio Asis** achieves vibrating color and spatial dynamics in his meticulous gouache paintings.



Vincent Longo



Antonio Asis



Christopher French



Sue Heatley

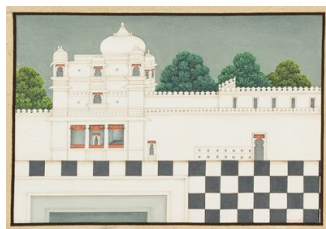
Mixed media works on paper by **Sue Heatley** interweave linocut, stenciling and direct painting with a flow of inspiration that draws from calligraphy, Indian art and movement within the natural world. Her printmaking methods express the direct, fresh quality of the medium while celebrating the creative possibilities of patterns, rhythm and natural phenomena.

**Jennifer Bartlett** has incorporated printmaking into her oeuvre since the beginning of her long and acclaimed career. Following her extensive series of 1992 *Homan-ji* paintings inspired by a trip to Japan, the silkscreen on view integrates still life, textile design and fluid abstraction in a characteristic Bartlett juxtaposition.

**Raja Ram Sharma**, a contemporary painter living in Udaipur, Rajasthan, celebrates the tradition of the Indian miniature in masterful paintings that draw attention to India's diminishing resources, its Mughal history and its current cultural disposition. Painting with ground mineral pigments and a single-hair paintbrush, Sharma's intricate, highly detailed works depict historical Rajasthani architecture in a rich, silent landscape.



Jennifer Bartlett



Raja Ram Sharma

The work of photographer **Adam Bartos** has taken him across the globe, from the backyards of Long Island to Russia and the Soviet space program. In 1981, Bartos visited an ornate Victorian era villa in Gujarat, India. The villa, a composite of Greek, Roman and Baroque architecture, captured his attention. His photographs of this intriguing site convey a sense of timeless solitude and refinement.



Adam Bartos



Costantino Nivola

Born in Sardinia, **Costantino Nivola** made his home and studio in Springs in the late 1940s. His sculpture in bronze, cement, terracotta, travertine, tin and stone has been exhibited worldwide, and his murals and reliefs imparted a seamless integration of sculpture and architecture to numerous urban settings across the country. His 1962 terracotta bas-relief depicts the Louse Point beachside where the Nivola family spent many long summers.



Kathryn Lynch

In her beguiling paintings, **Kathryn Lynch** extols the scenic panoramas seen from her Shelter Island summer home. Dynamic and spirited, Lynch's brushwork is brisk and painterly, lending lucidity and freshness to a body of work that celebrates her rural and waterside surroundings.

[www.drawingroom-gallery.com](http://www.drawingroom-gallery.com)

Gallery Hours: Monday, Friday and Saturday 10-5; Sunday 11-5

For further information and reproduction quality images, please contact Janet Goleas at 631 324.5016