

THE DRAWING ROOM

EMILY GOLDSTEIN & VICTORIA MUNROE

JACK YOUNGERMAN
Works on Paper 1954 - 2019
July 5 - August 5, 2019



Thicket, 1954
gouache and ink on paper
4 1/2 x 5 inches
11 1/8 x 11 1/4 inches framed
(JY6403)



Untitled, 1955
gouache, collage on paper
4 1/2 x 4 1/2 inches
11 x 10 5/8 inches framed
(JY8439)



Blue/Black, 1955
gouache and cut paper
4 1/4 x 3 1/2 inches
10 7/8 x 10 inches framed
(JY9052)



Black/Red/Blue, 1956
gouache on paper
4 1/2 x 5 1/2 inches
12 x 11 7/8 inches framed
(JY9050)

55 MAIN STREET EAST HAMPTON NY 11937 T 631.324.5016

www.drawingroom-gallery.com



Black/Red Cut Paper, 1961
gouache, cut paper
6 9/16 x 5 7/8 inches
13 1/8 x 12 1/4 inches framed
(JY8448)



Untitled #619, 1955
gouache, cut paper
5 3/4 x 5 5/8 inches
12 1/8 x 11 7/8 inches framed
(JY8443)



Ink #40, 1968
India ink on paper
23 x 29 inches
25 1/8 x 31 1/8 inches framed
(JY8161)



Untitled Crimson/Blue, 1960
gouache on paper
5 7/8 x 6 inches
12 3/8 x 12 1/4 inches framed
(JY9049)



Untitled (#452), 1960
gouache and pencil on paper
5 1/8 x 4 7/8 inches
12 x 11 1/4 inches framed
(JY9051)



Mixing, 1960
gouache on paper
4 5/8 x 4 3/4 inches
11 1/8 x 10 7/8 inches framed
(JY6404)



Red Corner II, 1963
gouache on paper
4 1/2 x 4 inches
11 x 10 3/4 inches framed
(JY6400)



Untitled, 1963
watercolor on paper
7 1/8 x 7 1/2 inches
13 7/8 x 13 3/4 inches framed
(JY9043)



Passing, 1963
ink on paper
20 x 23 1/2 inches
22 1/8 x 26 inches framed
(JY9033)



Untitled Ink, 1964
ink on paper
25 1/2 x 20 1/4 inches
28 1/2 x 22 3/4 inches framed
(JY9031)



Red Around, 1965-2006
gouache and acrylic on paper
8 1/4 x 7 1/2 inches
11 1/8 x 10 1/4 inches framed
(JY9035)



Untitled (#751), 1964
gouache on paper
21 3/4 x 25 1/4 inches
23 3/4 x 27 inches framed
(JY9030)



Edge Yellow II, 1964
gouache and pencil on paper
4 3/4 x 3 1/2 inches
11 x 9 inches framed
(JY6397)



Untitled, 1966
gouache on paper
9 x 7 1/2 inches
15 5/8 x 13 3/4 inches framed
(JY9044)



In Black, 1966
gouache on paper
4 3/4 x 6 3/4 inches
11 3/8 x 13 3/8 inches framed
(JY9048)



White Up, 1971
acrylic on paper
4 1/2 x 4 3/8 inches
11 x 1/8 x 10 3/4 inches framed
(JY6401)



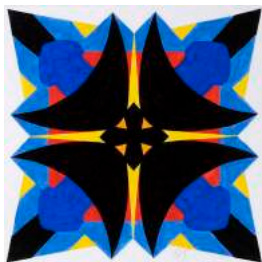
Untitled Blue, 1969
gouache on paper
12 x 10 5/8 inches
13 3/4 x 12 3/8 inches framed
(JY9039)



Blue Triangle, 2011
gouache on handmade Japanese paper
9 x 10 inches
11 x 12 1/4 inches framed
(JY6362)



Yellow Red Blue, 2015
gouache on handmade Japanese paper
19 1/2 x 18 inches
21 1/2 x 20 1/8 inches framed
(JY9034)



Foil Black 2, 2019
gouache on paper
18 3/4 x 18 3/4 inches
20 1/2 x 20 1/2 inches framed
(JY9041)



Yellowblack, 2016
gouache on cardboard
18 5/8 x 17 1/2 inches
20 1/4 x 19 inches framed
(JY9036)



White/Yellow/Black, 2012
gouache on handmade Japanese paper
14 x 12 1/4 inches
16 1/4 x 14 1/4 inches framed
(JY6276)



Triangle White, 2009
watercolor on paper
11 7/8 x 11 7/8 inches
13 3/8 x 13 3/8 inches framed
(JY9063)



Crux Tondo, 2010
india ink on paper
10 7/8 x 10 1/2 inches
12 3/8 x 11 7/8 inches framed
(JY9065)



White In, 2010
india ink on paper
11 x 11 3/4 inches
12 3/8 x 13 1/8 inches framed
(JY9040)



Yellow/Black Tondo, 2007
gouache on paper
12 1/2 x 11 3/4 inches
13 7/8 x 13 1/4 inches framed
(JY9028)



Tondo, 2010
india ink on paper
10 3/4 x 11 inches
12 1/8 x 12 3/8 inches framed
(JY9064)



Black/Red Diamond, 2010
gouache on paper
14 1/2 x 14 1/2 inches
16 7/8 x 16 7/8 inches framed
(JY9060)



In Blue, 2019
color pencil on paper
16 x 15 inches
17 3/8 x 16 1/4 inches framed
(JY9037)



In Red Diamond, 2018
gouache on paper
16 x 16 inches
17 1/2 x 17 1/2 inches framed
(JY9061)