

FRENCH 19TH & EARLY 20TH CENTURY

DRAWINGS FOR DESIGN

JANUARY 12 - FEBRUARY 26, 2007

Jules-Germain Olivier (Toulouse, 1869-1940)

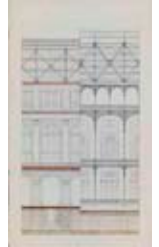
Study of a building in elevation and cross-section with metal beams and architectural details, c. 1880-90

ink and watercolor on paper

Signed: Olivier At. Raulin

33 1/8 x 19 1/2"

41 x 26 1/2" framed



Jules-Germain Olivier (Toulouse, 1869-1940)

Ironwork: Details of the Floors, c. 1890-1900

ink and watercolor on paper

Signed: Olivier At. Raulin

32 5/8 x 19"

41 1/4 x 26 1/4" framed



French, c. 1900

Gare de Caen: Tete de Halle ~ Ferme et Vitrace

ink and watercolor on paper

67 x 46"

69 1/4 x 48" framed



Jules-Germain Olivier (Toulouse, 1869-1940)

Ironwork, Details of the Roof Truss, c. 1890-1900

ink and watercolor on paper

Signed: Olivier At. Raulin

36 1/2 x 24 1/2"

33 1/4 x 44 3/4" framed



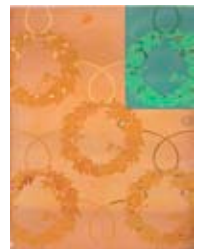
Armand Segaud (Paris, 1875-1930)

Art nouveau wallpaper design with yellow and green wreaths, c. 1900

pencil and gouache on paper

35 3/8 x 26 3/4"

38 5/8 x 30 1/8" framed



Ecole Lyonnaise, c. 1900
Wallpaper or textile design with white flowers and purple stripes
gouache on tracing paper
10 1/4 x 10 1/4"



Ecole Lyonnaise, c. 1900
Textile design with white and orange flowers
gouache on tracing paper
11 3/4 x 10 1/4"



Ecole Lyonnaise, c. 1900
Wallpaper or textile design with white flowers and red stripes
pencil and gouache on tracing paper
12 x 12"



Atelier Tony Pichon
Textile design with purple irises, c. 1925
pencil, ink and gouache on paper
24 3/8 x 18 5/8"
28 1/2 x 22 1/2" framed



Atelier Tony Pichon
Textile design with calla lilies, c. 1925
pencil, ink and gouache on paper
24 3/4 x 18 3/4"
28 1/2 x 22 1/2" framed



Armand Segaud (Paris, 1875-1930)
Art nouveau wallpaper design with red fuschia, c. 1900
pencil and gouache on paper
43 3/4 x 27"
47 1/2 x 30 1/2" framed



Edmund Foret (French, early 20th century)
Design for three pearl necklaces, c. 1940
pencil, watercolor and gouache on paper
12 1/2 x 8 1/4"



Andrée Legrand (Paris, active 1910-1930s)
Design project for a set of diamond and emerald jewelry, c. 1930
gouache on vellum
17 1/2 x 13 1/2"



Edmund Foret (French, early 20th century)
Design for a gold and pearl necklace, c. 1940
gouache on silver paper
10 3/4 x 8 1/4"



French, c. 1930
Stage design in two layers
gouache on two sheets of paper
12 3/8 x 19"
20 1/8 x 26 11/16" framed



Atelier of Paul and Raymond Templier (1891-1968)
Jewelry Design for a diamond brooch, c. 1935
pencil and gouache on paper
5 1/4 x 4"
10 1/4 x 9 3/4" framed



Atelier of Paul and Raymond Templier (1891-1968)
Jewelry Design three views of a diamond ring, c. 1935
gouache on black paper
5 1/2 x 4 1/8"
10 1/4 x 9 3/4" framed



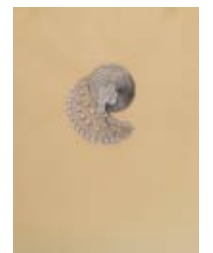
Atelier of Paul and Raymond Templier (1891-1968)
Jewelry Design two views of a diamond ring, c. 1935
gouache on black paper
5 1/2 x 4 3/8"
12 1/2 x 10 5/8" framed



Atelier of Paul and Raymond Templier (Paris, 1891-1968)
Jewelry design for a brooch, c. 1935
pencil and gouache on paper
5 1/2 x 4 3/8"
12 1/2 x 10 5/8" framed



Atelier of Paul and Raymond Templier (Paris, 1891-1968)
Jewelry Design for a diamond brooch, c. 1935
gouache on paper
6 3/8 x 4 7/8"
10 1/4 x 9 3/4" framed



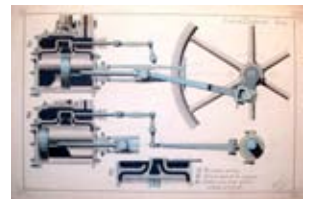
Atelier of Paul and Raymond Templier (Paris, 1891-1968)
Jewelry Design for a diamond brooch, c. 1935
pencil and gouache on paper
6 1/4 x 4 7/8"
10 1/4 x 9 3/4" framed



Albert Drablier (Ecole d'Electricité, Paris)
Dynamo Moteur, 1903
ink and watercolor on paper
12 3/4 x 18 3/4"



Albert Drablier (Ecole d'Electricité, Paris)
Mecanisme Moteur, 1903
ink and watercolor on paper
12 7/8 x 18 7/8"



Albert Drablier (Ecole d'Electricité, Paris)
Engrenage Conique, [Mechanical Gears], 1904
ink and watercolor on paper
19 3/8 x 12 1/8"



Albert Drablier (Ecole d'Electricité, Paris)
Dynamo Multipolaire, 1903
ink and watercolor on paper
12 3/4 x 18 1/2"



Albert Drablier (Ecole d'Electricité, Paris)
Excentrique, 1903
ink and watercolor on paper
12 1/2 x 19"



Albert Drablier (Ecole d'Electricité, Paris)
Engrenage A Wis Sans Fin, 1903
ink and watercolor on paper
12 x 16 1/4"

