

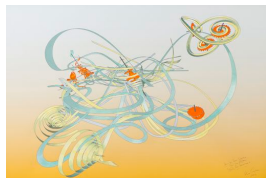
THE DRAWING ROOM

EMILY GOLDSTEIN & VICTORIA MUNROE

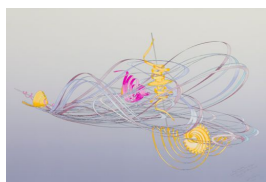
ALICE AYCOCK

new works on paper

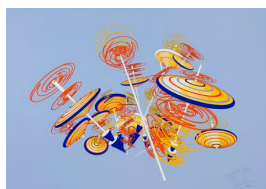
June 12 - August 12, 2013



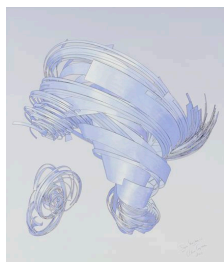
From the Series Entitled "Sum Over Histories" Study for a Timescape V, 2013
watercolor and inkjet printing on paper
36 x 53 inches
40 1/2 x 57 1/2 inches framed
titled, signed and dated lower right



From the Series Entitled "Sum Over Histories" Study for a Timescape IV, 2013
watercolor and inkjet printing on paper
36 x 53 inches
40 1/2 x 57 1/2 inches framed
titled, signed and dated lower right



Study for "The Spinning Tops", 2013
watercolor and inkjet printing on paper
36 x 48 inches
38 1/2 x 52 1/2 inches framed
titled, signed and dated lower right



Super Twister (1), 2013
watercolor and inkjet printing on paper
38 x 22 inches
41 x 35 1/4 inches framed
titled, signed and dated lower right



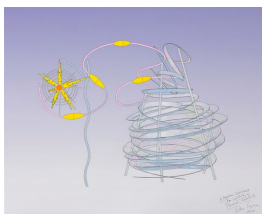
Proposal for Milwaukee View 2, 2013
watercolor and inkjet printing on paper
33 x 24 inches
35 5/8 x 26 3/4 inches framed
titled, signed and dated lower right



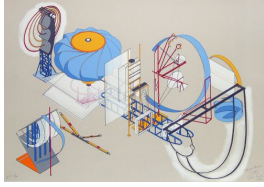
Proposal for Milwaukee View 3, 2013
watercolor and inkjet printing on paper
33 x 24 inches
35 5/8 x 26 3/4 inches framed
titled, signed and dated lower right



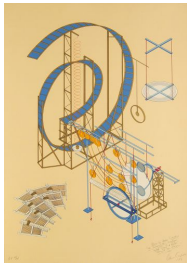
Proposal for Milwaukee View 1, 2013
watercolor and inkjet printing on paper
33 x 24 inches
35 5/8 x 26 3/4 inches framed
titled, signed and dated lower right



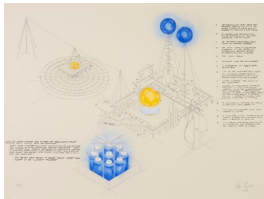
A Startling Whirlwind for University of Tennessee, Knoxville, 2013
watercolor and inkjet printing on paper
24 x 30 inches
27 x 33 inches framed
titled, signed and dated lower right



Hoodo (Laura), 1981
silkscreen
27 1/2 x 39 1/4 inches
30 3/4 x 42 1/2 inches framed
edition 20/45
titled, signed and dated lower right



From The Series Entitled "The Miraculating Machine: Mock Suns and Halos 'Round The Moon", 1981
silkscreen
39 1/4 x 27 1/2 inches
42 1/2 x 30 3/4 inches framed
edition 20/45
titled, signed and dated lower right



How to Catch and Manufacture Ghosts, Collected Ghost Stories from the Workhouse, 1981
photoetching with pastel additions on Stonehenge paper
29 x 38 13/16 inches
42 x 32 3/8 inches framed
edition 3/30
signed and dated lower right



Miami Proposal I (steel, concrete, water) Above- The Wheely Whirley Step, Below- The Island of the Assembly Place, 1990
silkscreen
29 x 22 inches
25 x 32 inches framed
edition 7/40
titled, signed and dated lower right



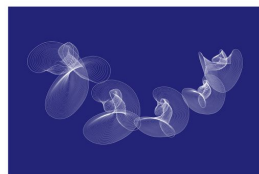
Miami Proposal II (steel, concrete, water)
Above-The Twin Big Wheel, Below-The
Island of the Rose Apple Tree, 1990
silkscreen
29 x 22 inches
25 x 32 inches framed
edition 1/40
titled, signed and dated lower right



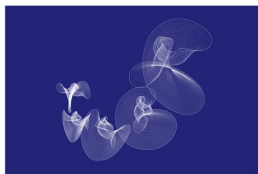
Miami Proposal III (steel, concrete, water)
Above-The Cyclone Tunnel, Below-The
Island of the Four Cardinal Points, 1990
silkscreen
29 x 22 inches
25 x 32 inches framed
edition 37/40
titled, signed and dated lower right



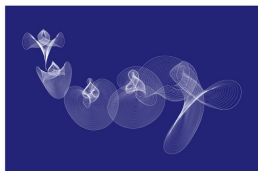
Miami Proposal IV (steel, concrete, water)
Above-The Descent and Reascent Arc,
Below- The Islands of the Suns and Moons,
1990
silkscreen
29 x 22 inches
25 x 32 inches framed
edition 7/40
titled, signed and dated lower right



Preliminary Study for a Strange Attractor
#1, 2011
inkjet print
18 x 24 inches
20 1/4 x 26 1/2 inches framed
edition 3/3
titled, signed, dated lower right



Preliminary Study for a Strange Attractor
#2, 2011
inkjet print
18 x 24 inches
20 1/4 x 26 1/2 inches framed
edition 3/3
titled, signed, dated lower right



Preliminary Study for a Strange Attractor
#3, 2011
inkjet print
18 x 24 inches
20 1/4 x 26 1/2 inches framed
edition 2/3
titled, signed, dated lower right



Preliminary study for a Strange Attractor
#4, 2011
inkjet print
18 x 24 inches
20 1/4 x 26 1/2 inches framed
edition 3/3
titled, signed, dated lower right