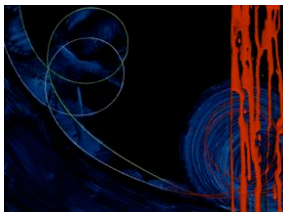


THE DRAWING ROOM

EMILY GOLDSTEIN & VICTORIA MUNROE

DOROTHEA ROCKBURNE

June 30 - July 25, 2011



Ecstatic Absorption, 2007
watercolor and Caran d'Ache
on masonite
9 x 12 inches
DR5276



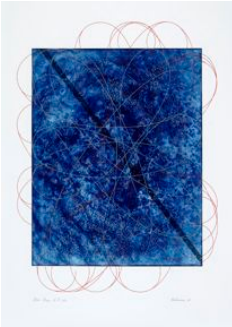
Prime Partition Five, 2006
watercolor on Dura-Lar
mounted on canvas
16 x 20 inches
DR5277



Particle Passage Partition 3, 2006
watercolor on Dura-Lar
mounted on canvas
16 x 20 inches
DR5279



1st Thoughts on Tearful Sisters,
1993
Lascaux Aquacryl, Caran d'Ache,
and collage on paper
12 1/2 x 17 inches
19 3/4 x 24 1/4 inches framed
DR5272



Blue Brane, 2005
Etching and silkscreen on
Somerset paper
42 x 30 inches
51 3/4 x 39 inches framed
Edition 1 of 10 AP
DR5273



Elliptical Turn, 2008
watercolor and Caran d'Ache
on masonite
12 x 16 inches
DR5278



Reinventing the Elements #9, 2001
Lascaux Aquacryl, pencil, copper
pencil on Strathmore 300 lb paper
6 x 4 1/8 inches
13 1/2 x 11 1/2 inches framed
DR5266



Reinventing the Elements #12, 2001
Lascaux Aquacryl, pencil, copper
pencil on Strathmore 300 lb paper
6 x 4 1/8 inches
13 1/2 x 11 1/2 inches framed
DR5265



Reinventing the Elements #19, 2001
Lascaux Aquacryl, pencil, copper
pencil on Strathmore 300 lb paper
6 x 4 1/8 inches
13 1/2 x 11 1/2 inches framed
DR5264



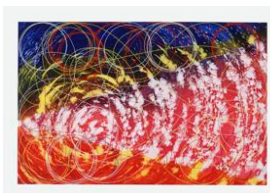
Reinventing the Elements #25, 2001
Lascaux Aquacryl, pencil, copper
pencil on Strathmore 300 lb paper
6 x 4 1/8 inches
13 1/2 x 11 1/2 inches framed
DR5268



Reinventing the Elements #2, 2001
Lascaux Aquacryl, pencil, copper
pencil on Strathmore 300 lb paper
6 x 4 1/8 inches
13 1/2 x 11 1/2 inches framed
DR5269

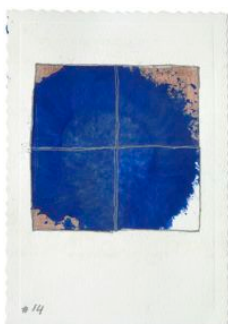


Reinventing the Elements #11, 2001
Lascaux Aquacryl, pencil, copper
pencil on Strathmore 300 lb paper
6 x 4 1/8 inches
13 1/2 x 11 1/2 inches framed
DR5270



Shadowed Perimeter, 2004-2008
etching and silkscreen on
Somerset paper
38 x 50 inches
46 1/2 x 47 1/2 inches framed
Edition 25 of 73
DR5274

ADDITIONAL WORKS



Reinventing the Elements #14, 2001
Lascaux Aquacryl, pencil, copper
pencil on Strathmore 300 lb paper
6 x 4 1/8 inches
13 1/2 x 11 1/2 inches framed
DR5267



Reinventing the Elements #1, 2001
Lascaux Aquacryl, pencil, copper
pencil on Strathmore 300 lb paper
6 x 4 1/8 inches
13 1/2 x 11 1/2 inches framed
DR5271