

# THE DRAWING ROOM

EMILY GOLDSTEIN & VICTORIA MUNROE

COSTANTINO NIVOLA  
Graffiti, Sculpture, Drawings & Prints  
August 9 - September 9, 2019

## CONCRETE



*M.02*, 1965  
concrete, paint  
13 3/4 x 12 x 7 inches  
signed and dated  
(CN7419)



*M41*, c. 1950s  
concrete  
16 1/2 x 15 x 11 inches  
no signature  
(CN5977)



*M25*, 1970  
concrete  
7 1/2 x 4 7/8 x 3 1/4 inches  
signed and dated lower left  
(CN9161)



*M33*, c. 1950s  
concrete  
16 5/8 x 14 3/16 x 10 9/16 inches  
unsigned  
(CN5981)

55 MAIN STREET EAST HAMPTON NY 11937 T 631.324.5016

[www.drawingroom-gallery.com](http://www.drawingroom-gallery.com)



*M.01*, 1969  
concrete, paint  
19 x 9 1/2 x 3 3/4 inches  
signed and dated  
(CN7147)

#### WALL RELIEFS



*C23*, 1962  
clay  
16 7/8 x 17 x 1 5/8 inches  
19 1/2 x 19 1/2 x 2 inches framed  
signed and dated lower right  
(CN7031)



*A.01 (St. Louis Relief)*, c. 1963  
sand cast plaster relief  
15 1/2 x 43 1/2 x 7/8 inches  
(CN7479)



*A7*, c. 1962  
graffitos  
20 1/8 x 24 1/4 x 3/4 inches  
(CN9160)



*A26*, c. 1962  
graffitos  
14 1/8 x 26 3/4 x 5/8 inches  
(CN9164)



*A6*, c. 1962  
graffitos  
20 1/8 x 24 1/4 x 3/4 inches  
(CN9159)



A.02  
polychrome sand cast plaster relief  
9 3/4 x 21 1/4 x 3/4 inches  
signed, titled verso  
(CN7625)

MARBLE



N31, 1980  
marble  
5 3/8 x 5 3/8 x 3 3/4 inches  
signed and dated lower back "Nivola 80"  
(CN3537)



N27, 1980  
marble  
5 3/4 x 6 x 3 5/8 inches  
signed and dated lower right "Nivola 80"  
(CN3535)



N30, 1980  
marble  
6 x 4 3/4 x 1 1/4 inches  
signed and dated lower right "Nivola 80"  
(CN3536)



N54, 1982  
marble  
6 3/4 x 11 1/4 x 1 1/8 inches  
signed and dated verso at lower right "Nivola  
1982"  
(CN3539)

BRONZE



P67, 1982  
bronze  
8 3/4 x 4 3/8 x 1 1/8 inches  
Ed. 2/7  
signed and dated verso  
(CN9166.2)



*P31 (Architectures)*, 1981  
bronze  
3 7/8 x 3 1/4 x 1 3/4 inches  
signed/dated verso lower right "Nivola 1911-81"  
(CN3153)



*P66*, 1982  
bronze  
7 3/4 x 3 3/8 x 1 inches  
Ed. 1/7  
signed and dated verso  
(CN9168.1)



*P65*, c. 1982 - 84  
bronze  
6 1/8 x 1 1/2 x 6 7/8 inches  
Ed. 1/2  
unsigned  
(CN6589.1)



*P68*, 1982  
bronze  
7 3/4 x 3 3/8 x 1 inches  
Ed. 1/7  
signed and dated verso  
(CN9167.1)



*Bronze #4*, c. 1982  
bronze  
12 1/4 x 16 inches  
(CN5900)



*P29 (Architectures)*, 1981  
bronze  
4 1/8 x 3 x 2 7/8 inches  
signed verso lower right "Nivola 1911-81"  
(CN3180)

CLAY



*D275A*, 1973  
clay  
5 x 7 1/4 x 9 inches  
signed and dated right side "Nivola 73"  
(CN9117)



*D74*, 1971  
clay  
5 x 9 x 8 inches  
signed and dated "Nivola 1971"  
(CN9116)



*D135*, 1978  
clay  
3 x 7 x 6 inches  
signed and dated "Nivola 78" in front  
(CN9154)

DRAWINGS



*Sardinia*, 1978  
ink and pastel on paper  
21 7/8 x 30 inches  
(CN9008)



*Driving to Long Island*, 1978  
ink and pastel on paper  
21 7/8 x 30 inches  
(CN9005)



*Long Island, New York, 1978*  
ink and pastel on paper  
21 7/8 x 30 inches  
(CN9009)



*Rome, Italy, 1978*  
ink and pastel on paper  
21 7/8 x 30 inches  
signed & dated  
(CN9007)



*Delphi, Greece, 1978*  
ink and pastel on paper  
21 7/8 x 29 7/8 inches  
authenticated by RN verso  
(CN9004)

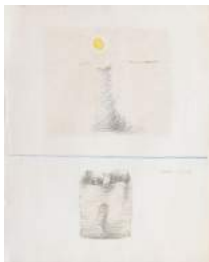


*Milan, Italy, 1978*  
ink and pastel on paper  
21 7/8 x 29 7/8 inches  
authenticated by RN verso  
(CN9006)

## PRINTS



*C3, 1963*  
lithograph  
28 3/8 x 22 7/8 inches  
Ed. 19/116  
signed & editioned  
(CN9011.19)



*C4, 1963*  
lithograph  
28 1/8 x 22 7/8 inches  
Ed. 19/103  
signed & editioned  
(CN9014.19)



C7, 1963  
lithograph  
28 7/8 x 22 7/8 inches  
Ed. 19/127  
signed, dated & editioned  
(CN9013.19)



C2, 1963  
lithograph  
28 7/8 x 23 1/8 inches  
Ed. 19/125  
signed & editioned  
(CN9012.19)