

THE DRAWING ROOM

EMILY GOLDSTEIN & VICTORIA MUNROE

SHARON HORVATH peaceable



Untitled (Edward Hicks #4), 2008
dispersed pigment, ink and polymer
on paper mounted on canvas
24 x 30 inches



Long Beach #1, 2008
dispersed pigment, ink and polymer
on paper mounted on canvas
12 x 12 inches



Long Beach #2, 2008
dispersed pigment, ink and polymer
on paper mounted on canvas
12 x 12 inches



Elemental Drift #1, 2008
dispersed pigment, ink and polymer
on paper mounted on canvas
diptych:
20 x 48 inches



Peaceable (for Edward Hicks), 2008
dispersed pigment, ink and polymer
on paper mounted on canvas
48 x 52 1/2 inches



Elemental Drift #6, 2008
dispersed pigment, ink and polymer
on paper mounted on canvas
24 x 30 inches



Red Bench, 2007
dispersed pigment and polymer on
canvas
36 x 46 inches



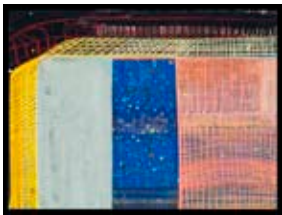
Elemental Drift #3, 2008
dispersed pigment, ink and polymer
on paper mounted on canvas
22 x 28 inches



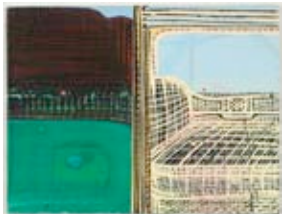
Elemental Drift #2, 2008
dispersed pigment, ink and polymer
on paper mounted on canvas
20 x 24 inches



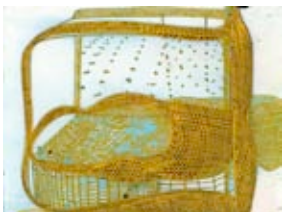
The Second Mirror, 2008
dispersed pigment and polymer on
canvas
36 x 40 inches



The Goodbye Door (2), 2007
dispersed pigment and polymer on
canvas
22 x 30 inches



Split It, 2007
dispersed pigment and polymer on
canvas
14 x 18 inches



Loom Variation, #1, 2006
dispersed pigment, ink and polymer
on paper
18 3/4 x 25 1/4 inches
21 3/4 x 28 1/4 inches framed



Monument, 2007
dispersed pigment and polymer on
canvas
70 x 76 inches



In a Mirror (2), 2007
dispersed pigment and polymer on
canvas
16 x 20 inches