

# THE DRAWING ROOM

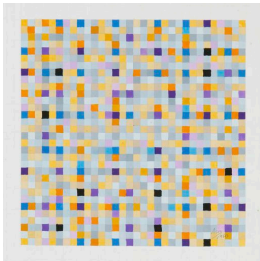
EMILY GOLDSTEIN & VICTORIA MUNROE

ANTONIO ASIS

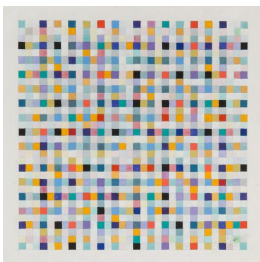
June 27 - July 28, 2014



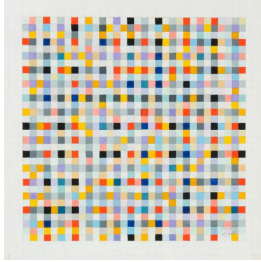
ANTONIO ASIS  
*Carrés rythmiques (966)*, 1960  
gouache on paper  
8 5/8 x 6 5/8 inches  
signed and dated lower right  
(AA6841)



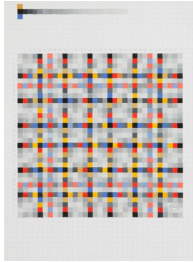
ANTONIO ASIS  
*Carrés rythmiques (2376)*, 1960  
gouache on paper  
11 3/4 x 8 1/4 inches  
signed and dated lower right  
(AA6836)



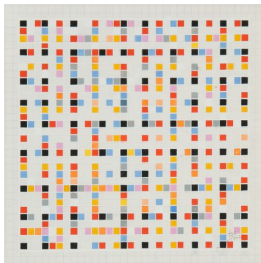
ANTONIO ASIS  
*Carrés rythmiques (2417)*, 1960  
gouache on paper  
11 5/8 x 8 1/4 inches  
signed and dated lower right  
(AA6843)



ANTONIO ASIS  
*Carrés rythmiques (2416)*, 1960  
gouache on paper  
11 5/8 x 8 1/4 inches  
signed and dated lower right  
(AA6844)



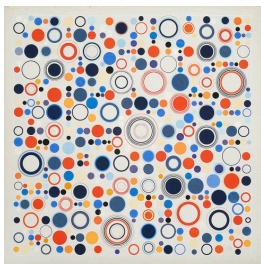
ANTONIO ASIS  
*Carrés rythmiques (2373)*, 1970  
gouache on paper  
11 3/4 x 8 1/4 inches  
signed and dated lower right  
(AA6842)



ANTONIO ASIS  
*Carrés rythmiques (2375)*, 1962  
gouache on paper  
11 3/4 x 8 1/4 inches  
signed and dated lower right  
(AA6837)



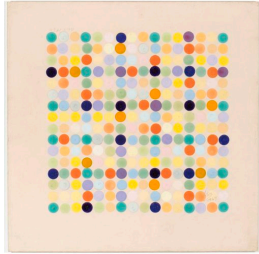
ANTONIO ASIS  
*Geometría libre (4503)*, 1968  
gouache on paper  
30 5/16 x 29 7/8 inches  
33 1/2 x 33 inches framed  
signed and dated lower right  
(AA6897)



ANTONIO ASIS  
*Geometría libre (4504)*, 1970  
gouache on paper  
30 5/16 x 29 7/8 inches  
33 1/2 x 33 inches framed  
signed and dated lower right  
(AA6901)



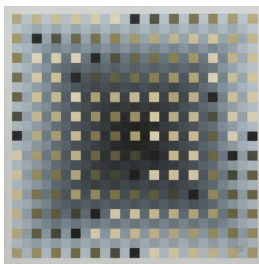
ANTONIO ASIS  
*Cercles polychromes dans l'espace (3040)*, 1968  
acrylic on masonite  
17 3/4 x 17 3/4 inches  
20 1/4 x 20 1/4 inches framed  
signed and dated lower right  
(AA6845)



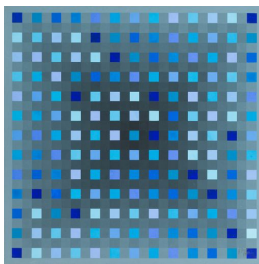
ANTONIO ASIS  
*Pastilles polychromes (1821)*, 1964  
gouache on paper  
8 3/4 x 8 3/4 inches  
11 1/2 x 11 1/2 inches framed  
signed and dated lower right and upper left  
(AA6846)  
SOLD



ANTONIO ASIS  
*Geometría libre (4508)*, 1967  
gouache on paper  
30 5/16 x 29 7/8 inches  
33 1/2 x 33 inches framed  
signed and dated lower right  
(AA6898)  
SOLD

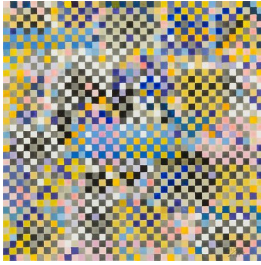


ANTONIO ASIS  
*Labyrinthe à effets de profondeur*, 1976  
gouache on paperboard  
15 3/4 x 15 3/4 inches  
signed and dated lower right  
(AA6879)



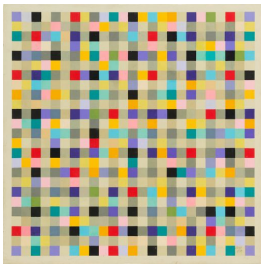
ANTONIO ASIS  
*Labyrinthe à effets de profondeur*, 1976  
gouache on paperboard  
15 3/4 x 15 3/4 inches  
signed and dated lower right  
(AA6876)

hallway



ANTONIO ASIS  
*Carrés rythmiques (1257)*, 1970  
gouache on paperboard  
8 1/4 x 8 1/4 inches  
14 1/2 x 14 1/2 inches framed  
signed and dated lower right  
(AA6838)

window



ANTONIO ASIS  
*Chromatisme quadrillé polychrome*, 1976  
gouache on paperboard  
15 3/4 x 15 3/4 inches  
signed and dated lower right  
(AA6878)  
SOLD